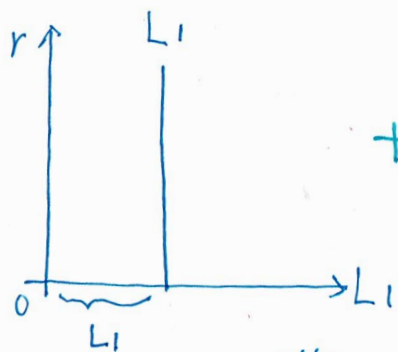
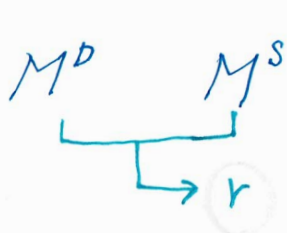
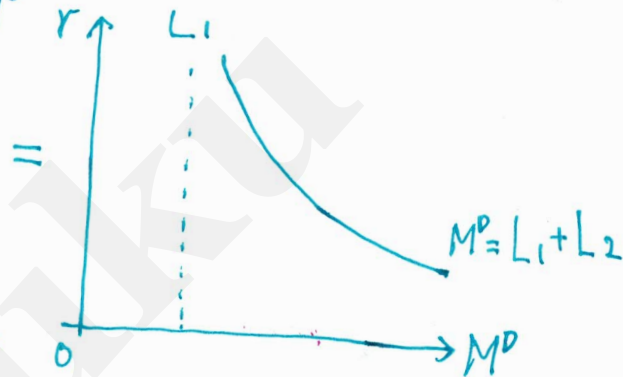
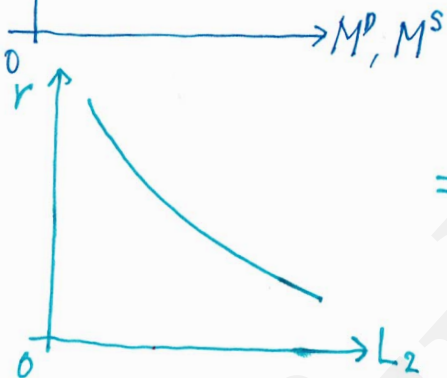


p120
 貨幣市場
 均衡

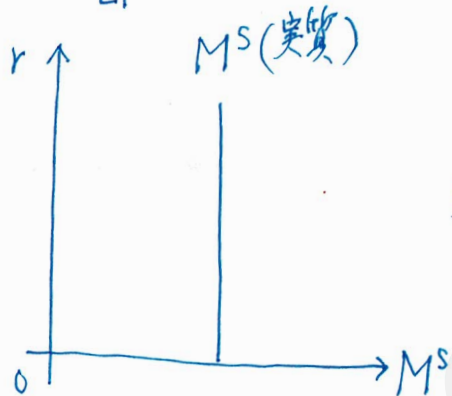
$M^D = \begin{pmatrix} L_1 \\ L_2 \end{pmatrix}$



+

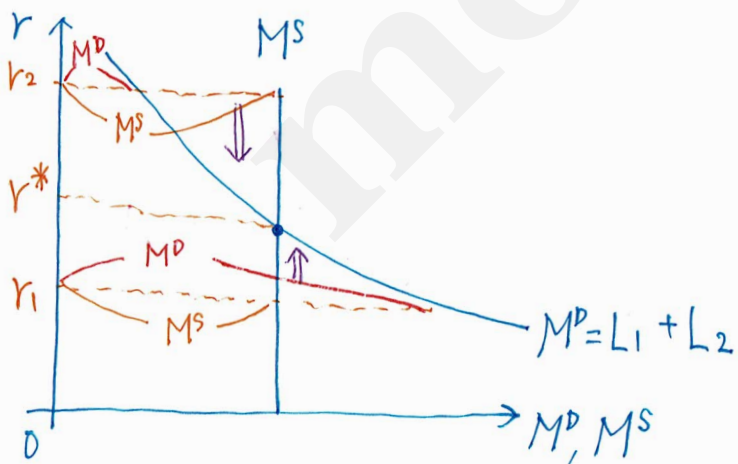


M^S



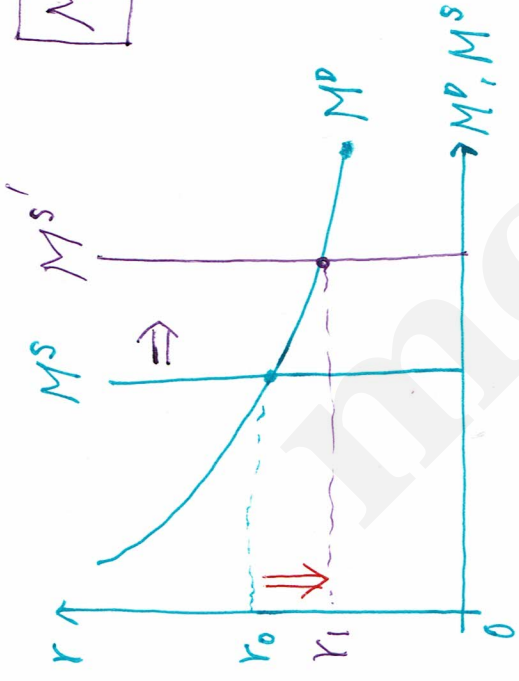
$$M^S_{\text{實質}} = \frac{\text{名目貨幣供給}}{\text{物價}(p)}$$

$M^D \text{ 及 } M^S$



p124
r の変化

$M^s \uparrow \Rightarrow r \downarrow$



$M^D \uparrow \Rightarrow r \uparrow$

